

CHEROKEE

GREY WOLF

TRAVEL TRAILERS

RUN WITH THE PACK.



BLACK LABEL



GREY WOLF

WHEN THE OPEN ROAD BECKONS AND THE WANDERLUST STIRS, CHEROKEE, BY FOREST RIVER, WILL HELP YOU ANSWER THE CALL.

Grey Wolf travel trailers and fifth wheels are built to give you better comfort, style and value, so you can enjoy your travels to the fullest. Our destination trailers are a luxurious end-of-the-journey in themselves – all available for you.





23DBH

SHOWN IN GLACIER

You will love the space provided in this double entry, double bunk bed Grey Wolf 23DBH travel trailer. The rear entry leads right into the full bath allowing easy access from outside when you need to use the bathroom while you're enjoying the great outdoors. The kids enjoy their rear bunk beds while you enjoy a good night's sleep in the queen bed with solid doors on both sides of the entertainment center.



26MBRR

SHOWN IN GLACIER

Sometimes the highlight of camping is the option to eat inside or outside. The 26MBRR allows you to cook outside or inside and sit at one of the two sofas with dinette table in the 14' 4" garage space. The walk-through bathroom is convenient to use from the master bedroom, creating a comfortable en-suite in the evening.





26DBH

SHOWN IN GLACIER

The Grey Wolf 26DBH is designed to balance residential comforts with practical features to make camping more enjoyable. The u-shaped dinette provides plenty of space for meals and games, while the walk-in pantry can store more than enough food for the weekend. The rear door leads into a full bath which is great for accessibility when outside and when you need to use the bathroom. When it comes to sleep eight people can fit between the double bed bunks and the convertible dinette, plus a queen bed for mom and dad up front.







29TE

SHOWN IN GLACIER

The Grey Wolf 26DBH is designed to balance residential comforts with practical features to make camping more enjoyable. The u-shaped dinette provides plenty of space for meals and games, while the walk-in pantry can store more than enough food for the weekend. The rear door leads into a full bath which is great for accessibility when outside and when you need to use the bathroom. When it comes to sleep eight people can fit between the double bed bunks and the convertible dinette, plus a queen bed for mom and dad up front.



LIMITED PACKAGE

*Optional package. Not all items available on all models. See participating dealers for details.



Super Kitchen with 10 Cu Ft Vibrationsmart DC Refrigerator and Chef Select Black Stainless Steel Kitchen Suite Package



Fireplace (not available on all models)



Cherokee Total Control App & Remote Control System



Upgraded Sofa with Bolster Arm Rests



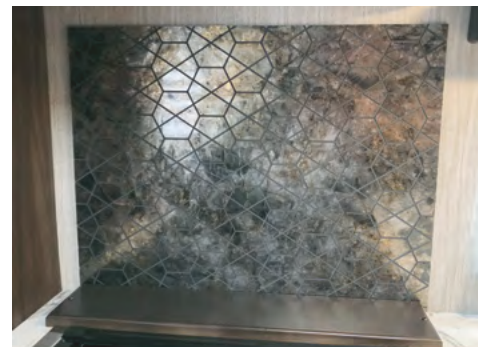
Full Hybrid Tub with Shower Surround



Matte Black Heavy Duty Spring Assisted Kitchen Faucet Sprayer



Residential Farm Style Black Stainless Steel Sink



Upgraded Designer Backsplash

LIMITED PACKAGE

* Optional package. Not all items available on all models. See participating dealers for details.



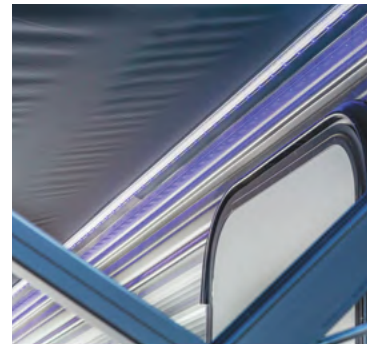
Premium Wheel Package



Tire Pressure Monitors



Cherokee Stable Step



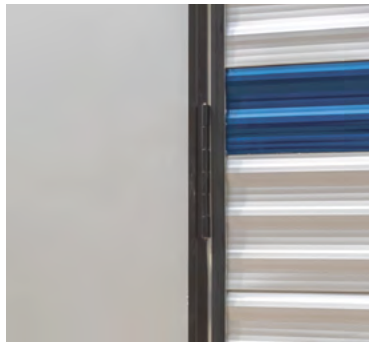
External LED Strip Lighting



External Porch Scare Light



USB Charging Stations
(Beds, Bunks, Tables where applicable)



Safety Slam Friction Hinge Entrance Door



Kitchen Skylight W/ Shade (N/A on FW)



LED Interior Lights



LED Strip Lighting
(not available on all models)



Ramp Door Patio System (Available on Toyhauler Models Only)



Light Filtering Sheer Shading
Premium Black Out Zebra Blinds



Premium Teddy Bear Bunk Mats



Premium Bedding Ensemble and Comforter

BASECAMP PACKAGE

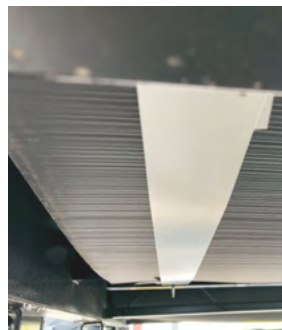
* Optional package. Not all items available on all models. See participating dealers for details.



Back Up Camera Ready



Outside Shower with Hot and Cold Water



Enclosed Tanks



Power Awning with Blue Led Strip Lighting



Large Exterior Folding Assist Grab Handle



Black Waste Tank Flush Out Kit



Flip Down Travel Rack (not available on all models)



Power Tongue Jack



RVQ Quick Connect



Solar Prep and Wiring



Outside TV Bracket and Hook Ups

CAMPFIRE PACKAGE

* Optional package. Not all items available on all models. See participating dealers for details.



40" Dinette Drawers x 2 (not available on all models)



Sink Cover



6 Gallon Gas/Electric DSI Water Heater



Solid Bedroom Doors (not available on all models)



Entertainment System



Skylight over Shower



Oven w/ Light



Cabinets in Bedroom (not available on all models)



High Output Attic Fan in Bathroom



Roof Mounted Ducted Air Conditioner

20RDSE



[VIEW VIRTUAL TOUR](#) | [OPEN FLOOR PLAN SHEET](#)

22MKSE



[VIEW VIRTUAL TOUR](#) | [OPEN FLOOR PLAN SHEET](#)

26CKSE



[VIEW VIRTUAL TOUR](#) | [OPEN FLOOR PLAN SHEET](#)

26DJSE

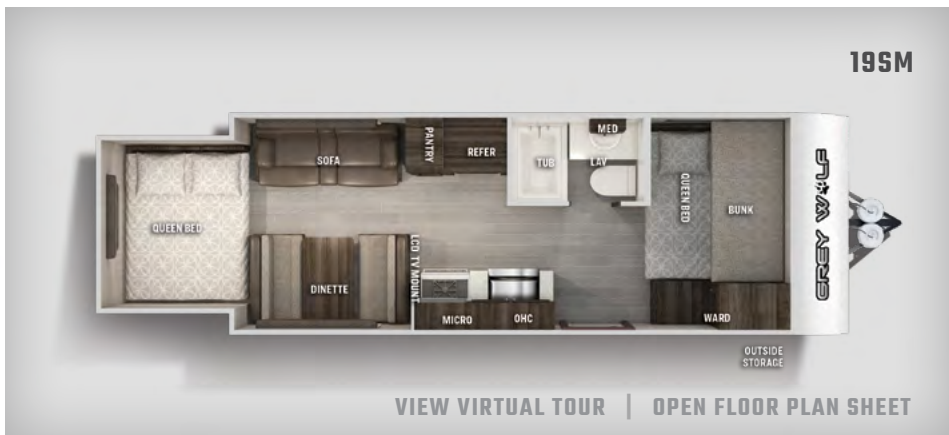
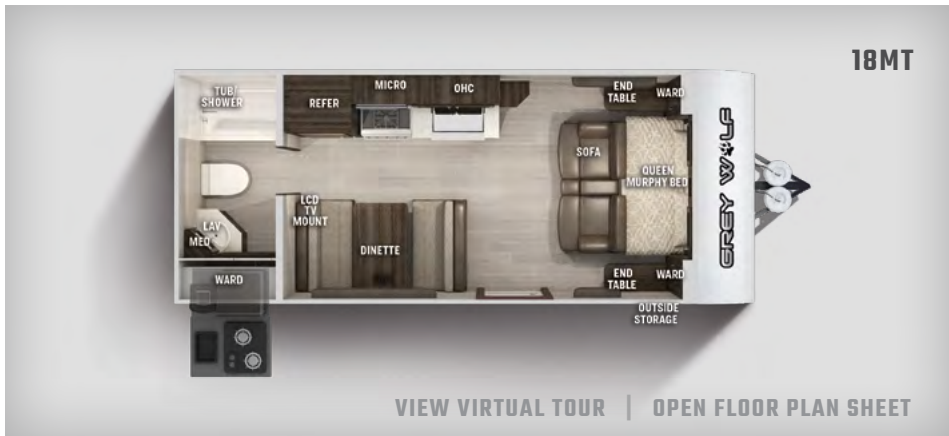


[YouTube](#) | [VIEW VIRTUAL TOUR](#) | [OPEN FLOOR PLAN SHEET](#)



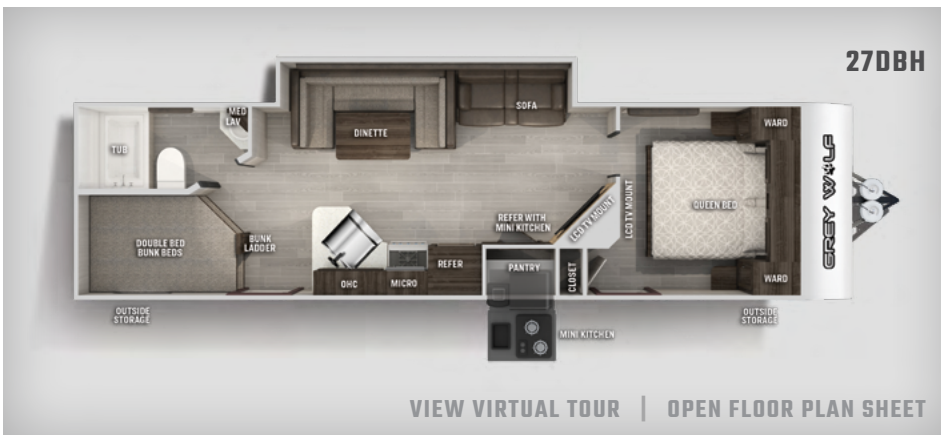
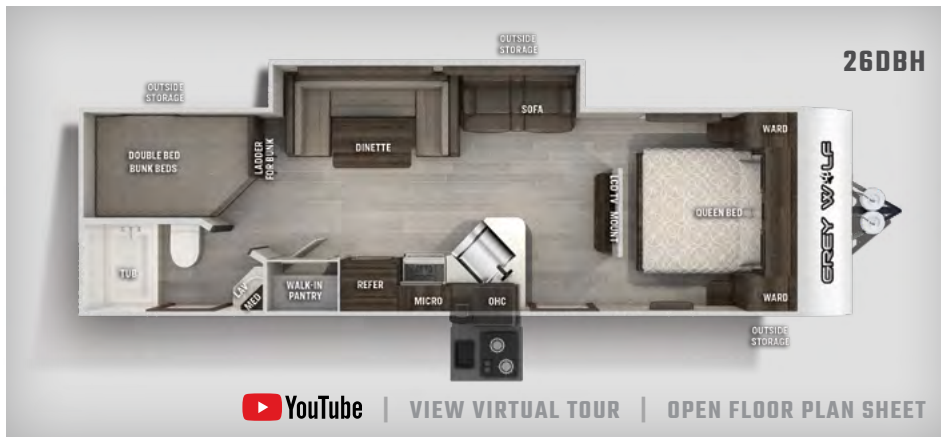
SE MODELS

	20RDSE	22MKSE	26CKSE	26DJSE
DRY HITCH WEIGHT (LBS.)	450-LBS.	585-LBS.	631-LBS.	574-LBS.
UNLOADED VEHICLE WEIGHT (LBS.)	4053-LBS.	4341-LBS.	5755-LBS.	4596-LBS.
AXLE WEIGHT (LBS.)	3565-LBS.	3718-LBS.	5086-LBS.	3984-LBS.
SHIP WEIGHT (LBS.)	4015-LBS.	4303-LBS.	5717-LBS.	4558-LBS.
CARGO CARRYING CAPACITY (LBS.)	3397-LBS.	3244-LBS.	1876-LBS.	2978-LBS.
EXTERIOR LENGTH	25'-2"	26'-7"	32'-10"	29'-4"
EXTERIOR HEIGHT W/ AC	10'-6"	10'-6"	10'-6"	10'-6"
EXTERIOR WIDTH	97"	97"	97"	97"
GREY CAPACITY (GAL)	38 GAL.	38 GAL	38 GAL	38 GAL
BLACK CAPACITY (GAL)	28 GAL.	28 GAL	28 GAL	28 GAL
FRESH CAPACITY (GAL)	46 GAL.	46 GAL	46 GAL	46 GAL



TRAVEL TRAILERS

	18MT	19SM	23DBH	23MK
DRY HITCH WEIGHT (LBS.)	360-LBS.	526-LBS.	621-LBS.	608-LBS.
UNLOADED VEHICLE WEIGHT (LBS.)	4213-LBS.	4826-LBS.	5380-LBS.	5063-LBS.
AXLE WEIGHT (LBS.)	3815-LBS.	4262-LBS.	4721-LBS.	4417-LBS.
SHIP WEIGHT (LBS.)	4175-LBS.	4788-LBS.	5342-LBS.	5025-LBS.
CARGO CARRYING CAPACITY (LBS.)	3147-LBS.	2700-LBS.	2241-LBS.	2545-LBS.
EXTERIOR LENGTH	23'-7"	24'-3"	29'-3"	28'-10"
EXTERIOR HEIGHT W/ AC	10'-6"	10'-6"	10'-6"	10'-6"
EXTERIOR WIDTH	97"	97"	97"	97"
GREY CAPACITY (GAL)	38 GAL	38 GAL	38 GAL	38 GAL
BLACK CAPACITY (GAL)	28 GAL	38 GAL	38 GAL	38 GAL
FRESH CAPACITY (GAL)	46 GAL	46 GAL	46 GAL	46 GAL



TRAVEL TRAILERS

	24JS	26DBH	26MK	27DBH
DRY HITCH WEIGHT (LBS.)	470-LBS.	725-LBS.	790-LBS.	815-LBS.
UNLOADED VEHICLE WEIGHT (LBS.)	4443-LBS.	5795-LBS.	6073-LBS.	5825-LBS.
AXLE WEIGHT (LBS.)	3935-LBS.	5032-LBS.	5245-LBS.	5863-LBS.
SHIP WEIGHT (LBS.)	4405-LBS.	5757-LBS.	6035-LBS.	5010-LBS.
CARGO CARRYING CAPACITY (LBS.)	3027-LBS.	1930-LBS.	1717-LBS.	1952-LBS.
EXTERIOR LENGTH	27'-0"	31' 7"	33'-0"	33'-6"
EXTERIOR HEIGHT W/ AC	10'-6"	10'-6"	10'-6"	10'-8"
EXTERIOR WIDTH	97"	97"	97"	97"
GREY CAPACITY (GAL)	38 GAL	38 GAL	38 GAL	38 GAL
BLACK CAPACITY (GAL)	28 GAL	28 GAL	38 GAL	28 GAL
FRESH CAPACITY (GAL)	46 GAL	46 GAL	46 GAL	46 GAL



TRAVEL TRAILERS

	29BH	29QB	29TE
DRY HITCH WEIGHT (LBS.)	650-LBS.	977-LBS	837-LBS
UNLOADED VEHICLE WEIGHT (LBS.)	6314-LBS.	6618-LBS	6428-LBS
AXLE WEIGHT (LBS.)	5626-LBS.	5603-LBS.	5553-LBS.
SHIP WEIGHT (LBS.)	6276-LBS.	6580-LBS.	6390-LBS.
CARGO CARRYING CAPACITY (LBS.)	1336-LBS.	1359-LBS.	1409-LBS.
EXTERIOR LENGTH	33'11"	36'-6"	36'-6"
EXTERIOR HEIGHT W/ AC	10'-8"	10'-8"	10'-8"
EXTERIOR WIDTH	97"	97"	97"
GREY CAPACITY (GAL)	38 GAL	38 GAL	38 GAL
BLACK CAPACITY (GAL)	28 GAL	38 GAL	38 GAL
FRESH CAPACITY (GAL)	46 GAL	46 GAL	46 GAL



REAR RAMP MODELS

	19RR	22RR	25RRT	26MBRR
DRY HITCH WEIGHT (LBS.)	574 LBS	686-LBS.	690-LBS.	785-LBS.
UNLOADED VEHICLE WEIGHT (LBS.)	4180 LBS	4871-LBS.	5103-LBS.	5393-LBS.
AXLE WEIGHT (LBS.)	3568 LBS	4147-LBS.	4375-LBS.	4570-LBS.
SHIP WEIGHT (LBS.)	4142 LBS	4833-LBS.	5065-LBS.	5355-LBS.
CARGO CARRYING CAPACITY (LBS.)	3394 LBS	2815-LBS.	2587-LBS.	2392-LBS.
EXTERIOR LENGTH	23'11"	28'-10"	31'-5"	33'-4"
EXTERIOR HEIGHT W/ AC	10'-6"	10'-6"	10'-6"	10'-6"
EXTERIOR WIDTH	97"	97"	97"	97"
GREY CAPACITY (GAL)	28 GAL	38 GAL	38 GAL	38 GAL
BLACK CAPACITY (GAL)	28 GAL	28 GAL	38 GAL	38 GAL
FRESH CAPACITY (GAL)	46 GAL	46 GAL	46 GAL	46 GAL



26RR

[VIEW VIRTUAL TOUR](#) | [OPEN FLOOR PLAN SHEET](#)

27RR

[VIEW VIRTUAL TOUR](#) | [OPEN FLOOR PLAN SHEET](#)

REAR RAMP MODELS

	26RR	27RR
DRY HITCH WEIGHT (LBS.)	775-LBS.	934-LBS.
UNLOADED VEHICLE WEIGHT (LBS.)	5030-LBS.	5960-LBS.
AXLE WEIGHT (LBS.)	4217-LBS.	4988-LBS.
SHIP WEIGHT (LBS.)	4992-LBS.	5922-LBS.
CARGO CARRYING CAPACITY (LBS.)	2745-LBS.	1974-LBS.
EXTERIOR LENGTH	30' 8"	33' 4"
EXTERIOR HEIGHT W/ AC	10' 6"	10' 6"
EXTERIOR WIDTH	97"	97"
GREY CAPACITY (GAL)	38 GAL	38 GAL
BLACK CAPACITY (GAL)	38 GAL	38 GAL
FRESH CAPACITY (GAL)	46 GAL	46 GAL

CUSTOMER SATISFACTION



www.ForestRiverBuyLocal.com



PRE-DELIVERY INSPECTION FACILITY

20,000 square feet of quality assurance. The bare essentials for a premium product. This state-of-the-art facility gives immediate daily feedback to production for quality assurance in every unit built.



Learn More
Scan this barcode using a QR Reader on your smart phone to learn more about Forest River.



A Berkshire Hathaway company.



FREE MEMBERSHIP
to Forest River Owners' Group

www.forestriverfrog.com



WWW.FORESTRIVERINC.COM

YOUR GREY WOLF DEALER

All information contained in this brochure is believed to be accurate at the time of publication. However, during the model year, it may be necessary to make revisions and Forest River, Inc., reserves the right to make all such changes without notice, including prices, colors, materials, equipment and specifications as well as the addition of new models and the discontinuance of models shown in this brochure. Therefore, please consult with your Forest River, Inc., dealer and confirm the existence of any materials, design or specifications that are material to your purchase decision. Litho. U.S.A. FOR 1641 P/W: 2020.04.15



**24/7 EMERGENCY
ROADSIDE ASSISTANCE
WITH VEHICLE PURCHASE***

TOWING
JUMP-STARTS
TIRE CHANGES
FLUID DELIVERY
LOCKOUT
SERVICE

WINCH-OUT
MOBILE MECHANIC
TECHNICAL
SUPPORT
DEALER LOCATOR
SERVICES



*VALID FOR 1 YEAR FROM DATE OF PURCHASE

Specification Definitions

GVWR (Gross Vehicle Weight Rating) - is the maximum permissible weight of the unit when fully loaded. It includes all weights, inclusive of all fluids, cargo, optional equipment and accessories. For safety and product performance do NOT exceed the GVWR.

GAWR (Gross Axle Weight Rating) - is the maximum permissible weight, including cargo, fluids, optional equipment and accessories that can be safely supported by a combination of all axles.

UVW (Unloaded Vehicle Weight)* - is the typical weight of the unit as manufactured at the factory. It includes all weight at the unit's axle(s) and tongue or pin and LP Gas. The UVW does not include cargo, fresh potable water, additional optional equipment or dealer installed accessories.

*Estimated average based on standard build optional equipment.

CCC (Cargo Carrying Capacity)** - is the amount of weight available for fresh potable water, cargo, additional optional equipment and accessories. CCC is equal to GVWR minus UVW. Available CCC should accommodate fresh potable water

(8.3 lbs per gallon). Before filling the fresh water tank, empty the black and gray tanks to provide for more cargo capacity.

** Estimated average based on standard build optional equipment

Each Forest River RV is weighed at the manufacturing facility prior to shipping. A label identifying the unloaded vehicle weight of the actual unit and the cargo carrying capacity is applied to every Forest River RV prior to leaving our facilities.

The load capacity of your unit is designated by weight, not by volume, so you cannot necessarily use all available space when loading your unit.